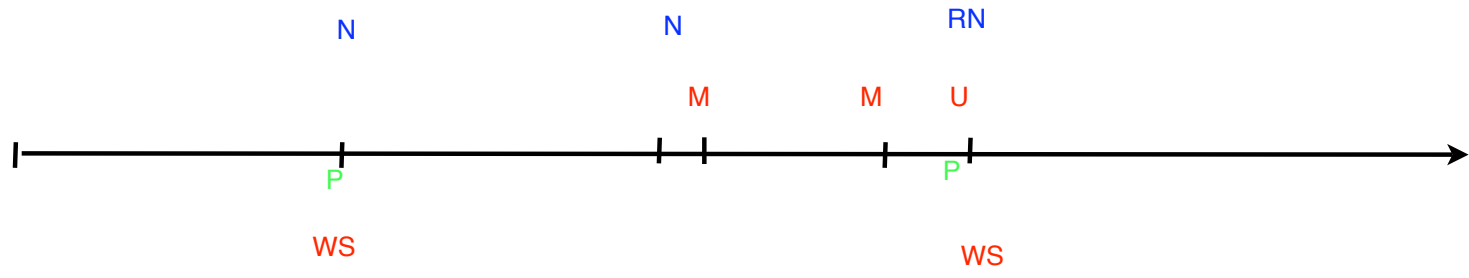
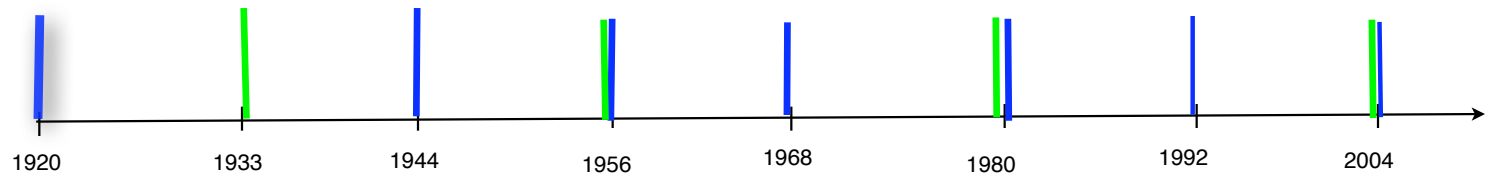
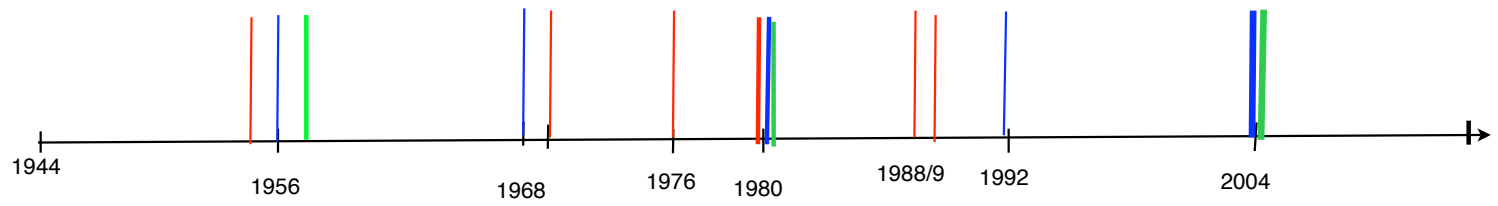


- workers, **WS** - worker Self-government, **M** - “Meat” Theme; **U** - Union Theme
- Peasants, **P**- Peasant Theme
- Intelligentsia; **N**- National Theme; **RN** Responsibility for the Nation Theme
- Catholic religion



1944 - 2004



1920 - 2004,
National and Peasant themes

